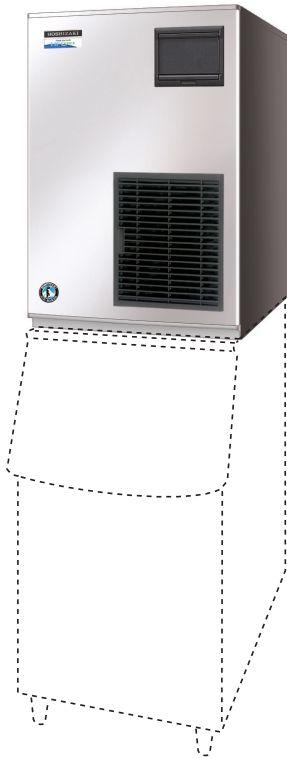



 12,2%



NATURAL
REFRIGERANT
R290

Key Features

The FM-300AKE-HC-SB and FM-300AKE-HCN-SB are modular ice makers, which utilise Natural Refrigerant R290.

-  Energy efficient, with savings of 12.2% compared to HFC equivalent model.*
- ✓ Produces either Flake or Nugget (-N) ice.
- ✓ Members of the Emerald Class, Hoshizaki's new range of climate friendly ice makers.
- ✓ Can produce up to 300kg of ice (flake) and 250kg (nugget) per 24 hours (AT.10°C.WT.10°C).
- ✓ Flake ice applications: food processing, fish and fresh produce display, organ transportation in medical arena.
- ✓ Nugget ice applications: packaged produce display (bottled beverages and food) and as key ingredient in beverages.
- ✓ Efficient ice making process due to Hoshizaki's unique FM auger system. Utilises all water brought into the machine; therefore water consumption is equal to ice production.
- ✓ Auger is made of double hardened stainless steel. Combined with carbon bearings, they work optimally in a tough and wet environment. Benefits include: longer product life expectancy and reduced maintenance costs.
- ✓ Electronically controlled to ensure an optimised ice making process under varying circumstances without the need for physical adjustments. Quality of ice is always consistent.
- ✓ Main characteristic of Hoshizaki's Flake ice is that 'freeze- burn' is prevented when displaying fresh fish or produce.



FM-300AKE-HC-SB
Ice: Flake



FM-300AKE-HCN-SB
Ice: Nugget

Available Models

| Model | Air Cooled | Water Cooled |
|------------------|------------|--------------|
| FM-300AKE-HC-SB | ✓ | |
| FM-300AKE-HCN-SB | ✓ | |

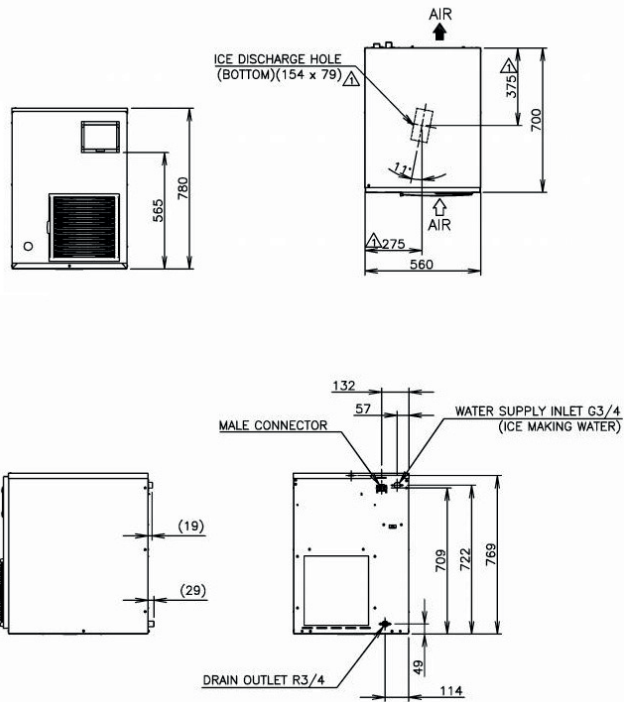
Bins

| Model | Type of Bin | Max. Bin Capacity approx. |
|-------------------------------------|-------------|---------------------------|
| B-301SA | Modular | 144kg |
| B-501SA, Top Kit - TK 8 D | | 217kg |
| B-801SA, Top Kit - TK 8 D + TK 18 D | | 348kg |

Production

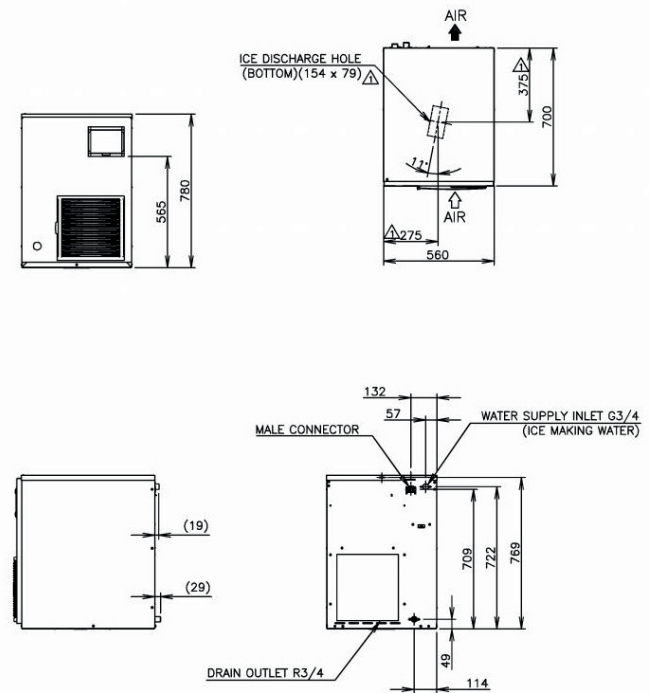
| Model | Ice Production per 24h approx. | Temperature | Water Consumption per 24h approx. |
|------------------|--------------------------------|------------------|-----------------------------------|
| FM-300AKE-HC-SB | 300kg | AT.10°C, WT.10°C | 0,300m ³ |
| | 250kg | AT.21°C, WT.15°C | 0,250m ³ |
| | 205kg | AT.32°C, WT.21°C | 0,205m ³ |
| FM-300AKE-HCN-SB | 250kg | AT.10°C, WT.10°C | 0,250m ³ |
| | 210kg | AT.21°C, WT.15°C | 0,210m ³ |
| | 175kg | AT.32°C, WT.21°C | 0,175m ³ |

FM-300AKE-HC-SB



FM-300AKE-HCN-SB

➔ CAD drawings available on our website



Specifications

| | FM-300AKE-HC-SB | FM-300AKE-HCN-SB |
|--|-----------------------|-----------------------|
| Dimensions W x D x H (mm) | 560mm x 700mm x 780mm | 560mm x 700mm x 780mm |
| AC Supply Voltage | 1/220-240V 50Hz | 1/220-240V 50Hz |
| Electric Consumption (AT.32°C, WT.21°C) | 900W | 960W |
| Heat Rejection (AT.32°C, WT.21°C) | 1840W | 1840W |
| Refrigerant Charge | R290 | R290 |
| Isolation | Polyurethane | Polyurethane |
| Weight Gross / Net | 88 kg / 81 kg | 88 kg / 81 kg |

Operation Requirements

| | |
|---------------------------------|------------------------|
| Ambient Temperature | 5 - 40°C |
| Water Supply Temperature | 5 - 35°C |
| Water Supply Pressure | 0,05-0,8MPa (0,5-8bar) |
| Voltage Range | Rated Voltage ± 6% |

Accessories

| |
|------------------|
| Installation Kit |
| Mounting Bracket |



WolfLabs

Pricing on any accessories shown can be found by keying the part number into the search box on our website.

The specifications listed in this brochure are subject to change by the manufacturer and therefore cannot be guaranteed to be correct. If there are aspects of the specification that must be guaranteed, please provide these to our sales team so that details can be confirmed.

www.wolflabs.co.uk

Tel : 01759 301142

Fax : 01759 301143

sales@wolflabs.co.uk

Please contact us if this literature doesn't answer all your questions.